



Hothfield News

July 2009

The Monthly Newsletter by and for the Hothfield Community

HOTHFIELD PARISH COUNCIL - Shirley Whittington

The objectives in the Hothfield parish plan will not be easy to realise but we have already made some progress thanks to villagers and officers of both Ashford Borough Council and Kent County Council. The new children's playground has been designed according to requests from children and parents. Work will start in September at an estimated cost of £60,000. The money comes from a grant given by the Big Lottery Fund and also from Ashford Borough Council's Community Grants Scheme. Some of the children know just how much money is to be spent so hopefully we shall all take good care of this area.



We also have to thank Kent County Council for funding extended day activities for children of primary school age. Again it is the children themselves who have chosen the activities that are taking place at the Bluebells Children's Centre until the end of the summer term. Secondary school children now have youth activities each Thursday funded by KCC in conjunction with the Borough Council.

It is good to know that Hothfield has a soccer team of 14 to 16 year olds who, by the time that this Newsletter is published will have taken part in a county wide 7 a side knockout competition in South Ashford. For this we have to thank our Community Warden, Dave Beckley, who has been responsible for getting the boys involved. So, lots of activities for our young people but what about the news for adults?

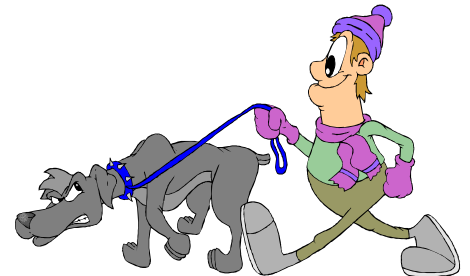


We all know from the Hothfield Appraisal that drivers speeding through the village are a major cause for concern to all of us. We do need more traffic calming measures but currently it is so difficult to make the authorities understand our worries. However that does not mean that we should not try. In the meantime the police have suggested that we try again the neighbourhood speed watch scheme. To do this however we need lots of volunteers to man the speed watch equipment. More importantly the police tell us that those of us who have cars could slow the traffic down by setting the example and driving at 30 mph through the village.



DODGY DOG OWNERS?

A while ago (just missing the deadline for the last issue) an older man was attacked by a dog while walking on Hothfield Common. The victim was bitten on the hand and quite shaken up but, unfortunately the dog owner appears to have simply walked away (thankfully taking his dog with him). The man was white, middle aged of proportionate build with dark hair and clean shaven while the dog was thought to be slightly larger than a spaniel and heavier set with short fur and dark brown or black in colour. If you are that man, or you recognise the description, or if you have been attacked by a dog (or by anyone or anything!) on the Common, please contact our local PC, Chris Miller on 07980 770577 or Ashford Police on 01233 611055.



KENT WILDLIFE TRUST - Ian Rickards

Hothfield Heathland Report

Dragonflies



Walking around Hothfield Heathlands on a hot sunny day recently, you may have spotted some of the nature reserve's most incredible inhabitants.

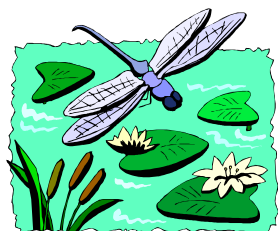
With their bright colours and impressive wingspans, dragonflies are an integral part of a heathland. Dragonflies were around long before the dinosaurs, and some prehistoric dragonflies had wingspans of 70cm!!! The insects we have on the reserve are somewhat smaller than that, the largest reaching a more modest 10cm.



Dragonflies have four obvious wings, which they hold wide open when they are not flying. There is a group of dragonflies called the damselflies, which are much more delicate, and these fold their wings behind them when they land.

When in flight they are among the fastest and manoeuvrable of all insects, a big dragonfly can whizz around at 36km/h, and because each wing is controlled independently, they can stop in mid air, move sideways or even backwards. They use this manoeuvrability to catch insect prey in mid air. Many of the large dragonflies will carry on flying while they eat their meal – ready to catch the next mouthful.

Dragonflies lay eggs in or near water, which then hatch to produce stumpy, wingless larvae. These larvae then spend up to three years under water feeding on other aquatic insects, tadpoles and even small fish. When they are ready to emerge, they climb out of the water onto stems of vegetation and a fully grown adult will squeeze out of the larvae's abandoned skin.



Dragonflies seem to like Heaths and bogs, in fact about a third of all British dragonflies live exclusively on Heathlands. The soil and water are very acidic, which means that there are not many fish to eat the young dragonflies – the pools also tend to stay warmer, which speeds up growth.

Over 15 species are known to hunt or breed on the reserve, and include such animals as the Banded Demoiselle with its metallic blue body and big blue/black band on its wings, the Keeled Skimmer, found nowhere else in Kent and the Emperor, which as the name suggests is one of Britain's biggest!!

For more information about dragonflies, the work of the Kent Wildlife Trust, and how you could get involved – please ring our main office on 01622 662012 or visit www.kentwildlifetrust.org.uk

ST MARGARET'S CHURCH NEWS – Sue

Patten

www.q7churches.co.uk



Services for July

Sunday 5 July 6.00pm Group Evensong

Sally will be ordained Priest, by the Bishop of Dover, in a special service at Westwell Church on 5 July at 10am. Please come along to support Sally in this special moment in her life.

Sunday 12 July 11.00am The Eucharist
11.00am Blessing of Animals Service at Pluckley Church

Sunday 19 July 11.00am Re:fresh Service in the Village Hall. Coffee and Bacon Rolls available at 10.30am.

Sunday 26 July 9.30am. Holy Communion

Deaths

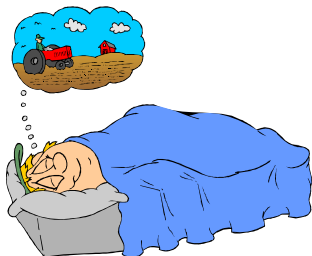
- Queenie Nockels died on Wednesday 22 April 2009 aged 96. Her funeral took place at Charing Crematorium on Friday 1 May 2009.
- Basil Turner died on Thursday 14 May 2009 aged 92. His funeral took place at Charing Crematorium on 29 May 2009.

May God enfold Queenie and Basil in his tender loving care.

The next coffee morning will be held in the village hall on Tuesday 7 July between 10.30 and 11.30am. Why not pop along and enjoy free coffee and cakes and a friendly chat.

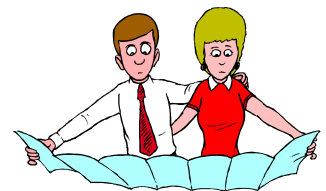


CAN YOU HELP? - Ed



We've been approached by Phil Gerry who lives at Orchard Heights who is trying to find out where his mother was billeted during WW2 at Hothfield. She was a member of the Land Army and stayed at 'Manor Farm' in Hothfield, her maiden name was Audrey Cook and she later married Mr Edward Gerry who was at the time a sergeant in the Worcestershire Regiment stationed in Dover. Phil is a keen cyclist and spoke to a lady in her garden, in Tufton Road asking whether she knew of a 'Manor Farm' and explaining his quest for information.

Phil is very keen to find out where this farm is located as he can not find it on any recent OS maps. He thought it unlikely to be the recently done up Manor Farm near the 13th century church, though, he says, he could be wrong! Phil asks whether any readers might be able to help him as he would love to be able to take his mother back there for a visit. If you can help, please speak to Chris Twydell who has contact details.



BLUEBELLS CHILDREN'S CENTRE PERFORMING ARTS AFTER SCHOOL CLUB Programme 3:30 to 5:00 pm

Date	Workshop	Capacity
Wednesday 01 July	Drama Fun and Games	15
Friday 03 July	Circus Skills	15
Wednesday 08 July	Drama Fun and Games	15
Friday 10 July	Funky Drumming	15
Wednesday 15 July	Circus Skills	15
Friday 17 July	Fun Teambuilding Games	15

Further information from the Children's Centre

Kent 
Extended Services

*Schools at the Heart
of the Community*

FISHY BUSINESS? - Ed



Many people will have heard that the life-size 'Yellow Fisherman' which was stolen from outside the Hothfield Fish and Chip shop on the A20 a while ago had been found. However, the one that was found was one stolen some years ago, and **not** the most recently stolen one. That latter one was found following a chance stop check on a van in Ashford which revealed the fisherman in the back of the van. Clearly, this was not a case of the one that got away! The two officers who stopped the vehicle and found the Fisherman were Dawn Kingsnorth and Helen Woollven who are stationed at Ashford Police Station and out thanks to them for this piece of positive policing for us. By the way, if anyone spots a house with six foot Gnomes in the garden, I'm sure the Police would be interested!

HOTHFIELD HISTORY SOCIETY – Chris Rogers

The central county archives at Kent County Council in Maidstone are held at the Centre for Kentish Studies. The Hothfield History Society has gleaned a lot of information from the documents, plans and photographs held in their extensive collections. Members of the History Society will soon be going to these central archives for training by their staff on how to preserve and catalogue our own records and documents.



There are many plans of land titles and contracts relating to the Hothfield Place estate at the Centre for Kentish Studies, as well as original plans for the possible lines of the railway to London (what is now the line through Pluckley).

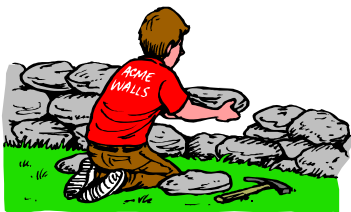
More recent records include the minutes of the Parish Council. Extracts of some of the minutes are transcribed below, and a few of which suggest that some things haven't changed.

Hothfield Parish Council records:

Parish Council meeting held on Monday 11 November 1895

The Hothfield Parish Council after discussion suggested modifications and amendments and submitted the following: *'That English material might be more frequently used on the main roads than granite or quartzite and local labour employed in breaking etc.'*

The second resolution was as follows: *'That the attention of the County Council be called to the useless and extravagant expenditure in connection with the management of the roads.'*



The third resolution ran as follows: *'That the council think it is false economy on the part of the Highway Authority to reduce the wages of the stone breakers and not the salaries of those holding higher offices.'*

The Hothfield Parish Council came to the conclusion that the last resolution was impracticable. The Clerk was instructed to communicate the result as well as to send reports of all meetings to the local newspapers. *[It seems that some 114 years later we still have the same issues about information not being shared with the community! – Ed]*



Parish Council Meeting held on 26 June 1899

It was proposed by Mr Sayer, seconded by Mr Luckhurst: *'That the postal authorities be approached with a view of an additional mail being dispatched from Hothfield Post Office to meet the last down train from Hothfield Station (Sundays accepted): that a copy of the resolution be sent to the Secretary of General Post Office London.'*

Parish Council Meeting held on 19 September 1933

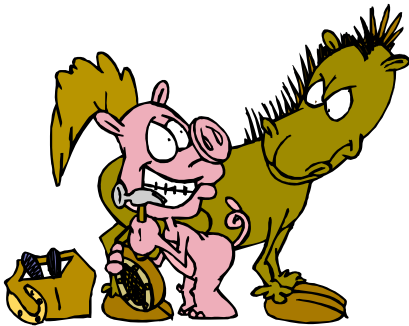
A letter with enclosures relating to the proposed Water Supply in which it stated that it was the intention of the Rural District Council to lay Water Mains in all their parishes and that they contemplated laying a 6" main from the School to the Rectory and also seeking the opinion of the Parish Council as to the creation of Hydrants. It was resolved to suggest a fire hydrant near the butcher's shop.



Haymaking Open Day at Hambrook Marshes, Canterbury

Saturday 4 July 11am – 4pm

Free admission to family day on the beautiful Hambrook Marshes.



Attractions include heavy horses cutting hay, country crafts, survival skills, arts and crafts, local food stalls, musicians, dancing and teas!

July is the time to cut the hay the traditional way. After the flowers have formed seeds the hay is cut and left on the ground for a few days before being gathered so that the seeds can fall into the ground for next year's flowers. Hambrook Marshes is being managed for biodiversity by local charity Kent Enterprise Trust to deliver our aim of offering training and employment for disadvantaged people. The fields are open to the public every day of the year, and we are recruiting volunteers and new members of the Friends of Hambrook Marshes group to help manage the site for the whole community to enjoy.

The event will be run by KET staff as well as volunteers from the Friends of Hambrook Marshes. To join the Friends group and volunteer on the day contact Chrissi Martin on 01227 265 899 c.martin@enterprisetrust.org

Directions by road via St. Dunstan's, Linden Grove, Whitehall Close and Whitehall Rd. Free parking on site on the day.



HOTHFIELD VILLAGE HALL - John Collins



EVENTS

Many thanks to all those who came along to the fun Quiz night and Ploughman's supper in May, we hope that you all enjoyed the evening. The event raised £114.50 towards the upkeep of the Hall. Superb food was provided by Caroline and Les Hughes which even included a tasty coleslaw hand-made by them; Caroline and Les also provided the questions for the night and we'd like to say a big thank you to them for their hard work.

The quiz was won by a team of interlopers from Whitstable brought in by Chris Rogers who had been trailing in second-to-last place until the end. We're planning another Quiz night for the autumn (probably in November) and this time Les and Caroline can take part as the questions will be provided by Chris' team. There is hoped to be a round of questions on Hothfield. Don't worry if you don't think your general knowledge is very good, it's still a fun evening for everyone.

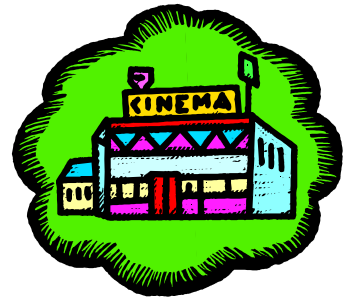


Don't forget our big **Jumble Sale on 8 August**. Doors open 2pm until 4pm so get there quick to bag a bargain. If you have any useful items of jumble, furniture or bric-a-brac then please take it along to John and Margaret Collins at 6 School Road anytime before 8 August.

We already have kitchen tables and chairs, a carpenter's bench up for grabs as well as lots of clothes that have already been donated for the sale. There will also be a few plants on sale. All proceeds will go towards maintaining and running the Hall so please have a good clear out of your unused household items and bring them along to sell for a good

VILLAGE PLAN

The Village Hall Committee looks forward to working with you the community and the Parish Council to provide some of those items mentioned in last month's Newsletter. The last Newsletter listed things that you would like to see and as your Hall is currently underused it will be the natural place to host things like the Social Club, Cinema Club; and we could consider, for example, providing computer facilities and a broadband connection so that training could be provided for all ages and those seeking retraining to enhance their professional skills.



VILLAGE HALL PROJECTS



The Village Hall committee is considering a number of projects to maintain and improve the hall for your benefit. We're sure that you would agree that the Hall is beginning to look tatty and needs some updating. We are therefore putting together bids for funding to refurbish the toilets and replace the flooring in the porch, but it will take us a long time to raise these funds.

In the more immediate future we're planning to redecorate the walls of the entrance area, and to get a water meter fitted to save money (thank you to Graham Parker we have already received notification that we don't have to pay for surface water drainage and so that is already saving us money! – see last month's newsletter for more information).

Noise from within the Hall, and from people leaving it is occasionally a problem. The flat roof above the kitchen area is not insulated and so we are looking for a Grant to replace the old felt and to insulate it at the same time. This will not only keep in the heat in winter but also will help to deaden noise from the hall. Insulation in the main hall roof itself is also not up to current standards and so again we can increase its thickness to absorb sound and to contain heat.



The huge fir trees outside the Hall are also a problem to maintain and are unsightly. We intend, in the autumn, to replace some of them with more suitable native trees.

The hedge along Park Drive in front of the Hall is also struggling as it does not get any light. More hedging will be planted and, once the Leylandii have been replaced, it should thicken and grow.

If anyone would like to donate a new tree, or contribute towards buying some mature specimens to plant later this year, then we would be very grateful. We also intend to install a noise baffle in front of the front doors to deaden some of the sound coming out of the hall.



If you want to know more about our plans for the Hall, and/or you would like to be involved or make your own suggestions, then please come along to any Committee meeting: we meet on the first Monday of each month at 7pm and we look forward to seeing you at our next meeting on 6 July.

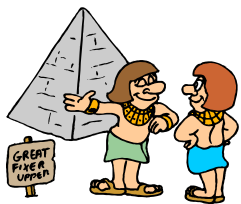


HOTHFIELD NEWS

All contributions, letters, comments etc for the newsletter should be sent to the Editor, Chris Twydell, at 37 Coach Drive by the 15th of each month or by email to hothfieldnewsletter@gmail.com 01233 635 372. If you would like to receive a copy of the newsletter by e mail, or would like a large print copy, please let me know. Thanks.

AND FINALLY.....

.....a pyramid isn't built from the top down. The pointy bit on the top can be put there only after laying down strong foundation stones, one by one. The same is true of achieving most things – whether delivering the Village Plan or anything else. The crucial thing is to lay the foundations and to get everyone understanding what we are trying to achieve - and then adding the different layers, gradually building upwards towards the end result we all want. And unless everyone agrees we are trying to build, we may end up with a different shape 'pyramid'!



This space is available for anyone who wants to share information, ideas, comments or anything else about Hothfield! Why not share something? I've given up expecting anything from our elected representatives at the Borough Council, County Council or Parliament and won't be chasing them again!

