



Hothfield News

April 2009

The Monthly Newsletter by and for the Hothfield Community

HOTHFIELD PARISH COUNCIL - Shirley Whittington

Firstly thank you to everyone who came along to the village appraisal feedback evening. It is really important for the Parish Council to know the views of the local community and to understand your priorities. Currently the comments received at that meeting are being worked on to form the Parish Plan which will be presented at the annual parish meeting to be held in the Village Hall on 8 May.



In the interim a start has already been made on some of your concerns. A Neighbourhood Watch scheme will be set up in the centre of the village with support from the police and our community warden. We already have seven volunteers prepared to help. If you feel you would like to be involved please talk to our community warden, Dave Beckley (mobile 07811271306) or our community policeman, Chris Miller (mobile 07980 770577) or alternatively you can always leave a message for them at the Children's Centre.

Also at the above meeting concern was expressed about the appearance of the village. Litter is still a major problem so Ken Marden has agreed to work for three hours each weekend to try to keep Hothfield looking tidy. He will work along Coach Drive, Park Drive, the top end of Beech Drive, The Street, Plantation Close and Sackville Close. Ken is a very valuable member of our community and so we should all help him by not dropping our rubbish in the street. If there are not enough litter bins provided let Ken know and we will do something about it.



The current state of our roads is causing all of us much distress and we need to work with Kent County Council to resolve our problems. Our local Borough Councillor, Neil Wallace has carried out an inspection of the problem areas and has submitted a detailed map to the County Council's Highways Department.

Finally I can tell you that our heritage village sign has been restored by Chris Rogers. We now need to know how and where we reinstate it. Its original place was at the corner of The Street and West Street. Suggestions please to the Clerk to the Parish Council, phone 733994 or any member of the Parish Council. My own telephone number is 621495.

CHARING CE PRIMARY SCHOOL – Ruth Burns

Boot Fair Saturday 25 April 7am at Charing School field

Cars £7 Vans £10 No Traders. Excellent bacon/sausages sandwiches available! Why not come and find a bargain or have a pitch yourself? If you are driving please enter School Road from the A20 past the Fire Station. To book a pitch call Sarah on 714877 or turn up on the day.

Please note that if there is a period of wet weather *prior* to the event the boot fair will have to be cancelled. Charing school PTA registered Charity:1096620



Charing School is collecting the following vouchers!



- ◆ **Sainsburys** (sports equipment)
- ◆ **Tescos** (computers)
- ◆ **Flora margarine** (cooking)
- ◆ **Morrisons** (gardening equipment) and **Nestle cereal tops** (books)

Please collect vouchers and drop into school. They are a great way of providing additional equipment and resources. Thank you for your support.

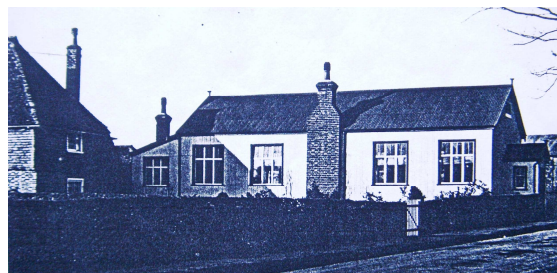
HOTHFIELD HISTORY SOCIETY – Chris Rogers

Hothfield's Village Halls

Not everyone may know that our large modern village hall on Park Drive is the second community hall that Hothfield has enjoyed. The first hall was on The Street next to 'Top Shop' (where a modern house now stands) and it was used by the Women's Institute.

The History Society is grateful to Irene Rymill for providing us with some of the background to this first hall. She tells us that it was built in the 1930s and it was clad in corrugated tin. This photo shows the view of the hall as it looked from where the Post Office is now ('Top Shop' would be built behind it in this photo).

The hall was used for lots of local functions including parties and meals for all the village children.



More recently our new larger hall was built on Park Drive. The land was kindly given to the village by Sir Reginald Rootes who had bought the Hothfield Manor estate. Ashford Borough Council built the hall and they lease it to our Parish Council who have full responsibility for it. The new hall was opened in October 1975 by Sir Reginald Rootes.

Every week there is a Bowls Club, Darts, a Karate Club and Bingo. Anyone is welcome to join in these activities.

The History Society is having an open meeting in the evening of Monday 18 May, in the Village Hall, with a speaker. Everyone is welcome. Please keep sending your memories, stories and photos to: hothfieldmemories@hotmail.com

VILLAGE HALL FOR HIRE!

If you wish to hire the Village Hall for your own function, club or party then please contact any of the Village Hall Committee, Parish Council or Sue Holloway for bookings on 01233 647266.



BLUEBELLS CHILDREN'S CENTRE – Ann Parker Manager

Bluebells Children's Centre, School Road, Hothfield, Kent TN26 1HA 01233 622296

On 18 February 2009 the Hothfield Children's Centre held their naming day at the local village hall. Parents had brought the number of names for the centre down to five so the vote was put forward for all who attended the day to decide. In the 3 hours over 200 people attended the day. Many were familiar families and there were lots of new faces which was great to see. The face painting was a great success with possibly the longest queue in the world! It was really nice to see so many professional looking tigers and butterflies. Sticky hands were hard at work at either designing their own badges or at the art workshop making collages, masks and pictures themed around the five chosen names. As always the circus school and bouncy castle was a favourite with many of the older children and the ball pond and baby play area was top for the younger ones.



The feedback from families was really positive stating how the day was very enjoyable and great fun for all the family. Without the support and help of all staff and volunteers the day would not have been such a great success so a big thank you to all.



After all the fun was exhausted parents and children voted for their preferred name. The overwhelming vote was for 'Bluebells' which we are delighted to say has been approved by Kent County Council.



The Share Group

Would you like to help your child learn in a relaxed and fun way? If so, you may like to join our informal group where each week we will make a game or activity with helpful ideas on how to help your children learn. This group is suitable for parents with children of all ages; from toddlers to teenagers and is linked to the national curriculum. **Places are limited, to avoid disappointment please book in advance.**

Food for Thought

What does food packaging really tell you? Fed up with fussy eaters? What fun food CAN you give your children?

This 4 week workshop starts on Thursday 23 April. **Places are limited, to avoid disappointment please book in advance**

Easter Workshops 5 – 11 years old

Thursday 9 April 2009 10am - 11.45 Easter Workshop

Thursday 16 April 2009 10am – 11.45 Healthy Eating Healthy, Oral Health workshop. **Places are limited, to avoid disappointment please book in advance**

Bluebells Children's Centre is closed on Good Friday (10 April 2009) and Easter Monday (13 April 2009).

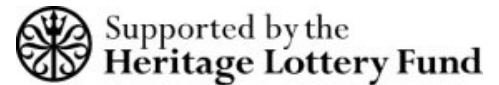


APRIL ACTIVITIES AT BLUEBELLS CHILDREN'S CENTRE

	am	Pm
Mon	Weekly Baby Sign and Rhyme 10-10.30am then Messy Play. 10.30-11.45am for Children aged 6 months - 2 years. Come along to the session that suits you, or stay for both!	From 20 of April for 10 weeks The Share Group 1 – 3pm. Parents, would you like to help your children learn in a relaxed and fun way? Free crèche places available for pre school children. Places are limited, to avoid disappointment please book in advance.
Tues	Fortnightly starting from 7 April Parent Volunteer Group 9– 12.30pm. If you would like to become a volunteer please contact Heather Curtin on 622296.	Tuesday 7 April (1 st Tuesday of every month) Child Health Clinic 2-3.30pm with Diana Barton
Wed		Weekly Drop in & Play Session for pre school children. 3.15 - 4.30pm
Thurs	Weekly Parent & Toddler Group 10-11.45am. All Welcome. Includes messy play activities, rhyme time & stories. The Toy library is open during this session. Parents can borrow a range of toys for a small fee.	From 23 April for 4 weeks Food For Thought 1.15 – 3pm. Free crèche places available for pre school children. Places are limited, to avoid disappointment please book in advance.
Fri	Weekly Twins Club 10am – 12pm	Weekly Drop in & Play Session for pre school children. 3.15 - 4.30pm

KENT WILDLIFE TRUST - Ian Rickards

Hothfield Heathland Report



It is an exciting time of year, Spring is well under way, and the wildlife is responding accordingly.

Many of the first butterflies are already on the wing, large yellow **Brimstones**, and **Peacocks** with their colourful eye spots are out and about. Unfortunately the **Small tortoiseshell**, which hibernates over winter was often our first butterfly of the year, but it is becoming more and more scarce. Look out for large queen **Bumblebees**, the

queen hibernate over winter emerging when it is warm enough to start a new nest. **Bumblebees** often nest underground, in old mouse holes, or hollow tree stumps.

Listen out for the drumming of **Greater spotted** and the **Lesser spotted woodpecker**. Instead of singing, **spotted woodpeckers** will drum on hollow trees, this marks out their territory and attracts females to the area. There are a number of other birds that make use of the big mature trees that grow on the tolls – **nuthatches** and **treecreepers** are both able to run up tree trunks looking for food, but only the **nuthatch** can run back down again!



Out in the bogs, there have been lots of **snipe** looking for food in the wet ground, when disturbed they fly quickly making an odd noise (like a muffled sneeze). On the wet meadows of the extension land, a group of **little egrets** have been taking advantage of the disturbed ground created by our contractors. Similar to herons, these beautiful white birds use their long beaks to hunt for invertebrates in the mud.



Kestrels are setting up their nests, they are easily recognised in the way they hover in the air. Wings beating fast, they watch carefully for mice and voles before diving at great speeds to catch their prey. You may also see one of our local **buzzards**. With huge wingspan, gliding effortlessly on rising air, their eerie call can be heard from many miles away.

If you would like to know more about work of the Kent Wildlife Trust, or would like to get involved in protecting Kent's wild areas please get in touch with the Kent Wildlife Trust on 01622 662012 or www.kentwildlife.org.uk

ST MARGARET'S CHURCH NEWS – Lindsay Hammond

www.g7churches.co.uk



Sunday 5 April	The Eucharist	9.30am
Wednesday 8 April	Meditation for Holy Week	7.30pm
Friday 10 April	Good Friday Service	9.30am
Sunday 12 April	Easter Day Family Eucharist	9.30am
Sunday 19 April	Re:refresh Service, Hothfield Village Hall	11.00am
Sunday 26 April	Holy Communion	9.30am

BAPTISMS

Sophie Ann WRIGHT

Sophie was baptised on Sunday 22 February 2009 at St Margaret, Hothfield.
May God make her home Christian and loving.

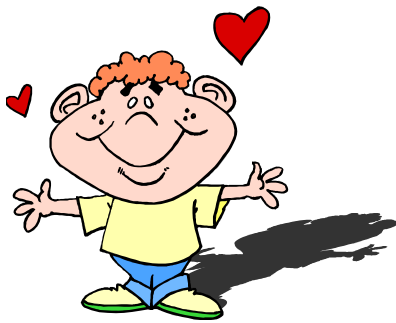
FUNERALS

Alice May NEAVES

Alice died on Sunday 25 January 2009 aged 89. Her funeral, followed by burial, took place at St. Margaret, Hothfield on Thursday 5 February 2009.
May God enfold Alice in his tender love and care.

Child Protection Seminar

The G7 Churches Pastoral Visitors have organised an evening seminar on Child Protection with Simon Tapp, Child Protection Adviser for the Diocese of Canterbury, in Charing barn on Friday 1 May at 7.30pm. This evening may be of interest to other community groups and organisations working with children and vulnerable adults. All welcome.



Coffee Morning

St. Margaret's Coffee and Cake morning will next be held on Tuesday 7 April between 10.30 and 11.30am . Why not pop along?



A Lily for Easter – Jane Oliver

It is time to start thinking about lilies for Easter. It is not too late to give a lily to St Margaret's Church for Easter in memory of a loved friend or relative. Please will you let me know in good time. We make a list of all the names and they are read out on Easter Sunday by the Vicar. Give Jane a ring on 01233 840310 and also if you would like to come along and help decorate the Church.



Curry and Quiz Evening, Friday 24 April

The Friends of St Margaret's Church Hothfield invite you to join them for this event at Hothfield Village Hall at 7 for 7.30pm Start. Tables of no more than 6 people, to give everyone a fair start. £10 a head which includes a fantastic curry prepared for us by Bina Patel, who we all know is a wonderful cook (but please bring along drinks and glasses). So don't miss out on this great evening, make up a table and come along. Tickets available from the Post Office until Wednesday 22 April. Any queries please contact Pat Warren 01233 612265.

Five Church Walk – Bank Holiday Monday 4 May

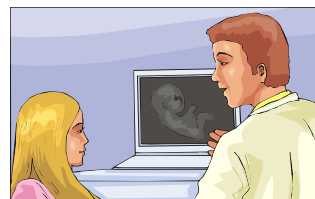


Come to admire the bluebells, hear the cuckoo and enjoy this unique walk along footpaths and bridleways. Start at any of the churches on the route, sign on and do as much or as little as you like. This year the route is clockwise, eg Chilham to Boughton Aluph (5m); Boughton Aluph to Challock (3m); Challock to Molash (3.5m); Molash to Chilham (4.5m).

Funds raised are for the participating churches, Kent Air Ambulance and/or Kent Pilgrim's Hospice – you choose. Download entry forms from www.allsaintsba.org.uk or phone 01227 738591 or register on the day at the churches. So get sponsored or just make a donation (minimum £5 per person). No need to pack a lunch as catering is available at each church.

CHARING SURGERY LIAISON GROUP – Pat Coles Hothfield Representative

The partners at Charing Surgery are having an extension built and the committee is trying to raise funds for an ultrasound scanner. The Liaison group raises funds as part of their remit. To date we have raised over £10,500 towards the scanner by having coffee mornings, open houses, sponsored runs, selling surgery calendars and having raffles. The practice has 8,000 patients and with the extension will be able to accommodate 10,000.



The Liaison group was formed in June 1996 as a go-between for doctors and patients and later as a fund raising body. Working together with the doctors two newsletters are produced a year. Any problems patients may have can be brought to the attention of the village representative and then raised at one of our quarterly meetings. The meetings are held in the surgery at Charing.

Not only would the scanner benefit our patients but surrounding practices would be able to use it too. It would save a twelve week wait at the William Harvey hospital and the transport and parking problems of getting there. Buses from the villages are few and far between. Some places only have public transport once or twice a week. It would also help the hospital by having to provide less scans for our patients. The machine is not only for pregnant mums but for all ages with a variety of symptoms.



We are asking, if it is at all possible, that you may be able to help us find some funding towards this task. The total cost is, at the moment, £18,000. *[For more information about the Liaison Group, or to feed in thoughts and ideas, contact Pat on 01233 625 580 – Ed]*

HOTHFIELD NEWS

All contributions, letters, comments etc for the newsletter should be sent to the Editor, Chris Twydell, at 37 Coach Drive by the 15th of each month or by email to hothfieldnewsletter@gmail.com 01233 635 372. If you would like to receive a copy of the newsletter by e mail, or would like a large print copy, please let me know. Thanks.

AND FINALLY..... knowledge is knowing that a tomato is a fruit. **Wisdom** is knowing not to put it in a fruit salad!