

Hothfield News

September 2008

The Monthly Newsletter by and for the Hothfield Community

WELCOME

Welcome to Autumn! Summer seems to have passed us by but despite the nights starting to draw in, there is still a lot happening in Hothfield. Two particular events are the Fun Day on 6 September and on 25 October the 'Hothfield Then and Now' event. Each of them deserves our full support so make a note of the dates now and if you would like to help with either, get in touch with the organisers. Attached to this newsletter is a superb special colour supplement about the 25 October event – hopefully this will whet your appetite for that event!



HOTHFIELD PARISH COUNCIL - Shirley Whittington



Over the past few months there have been two public meetings in our village through the police initiative PACT (Partners and Community Together). These meetings were chaired by our village policeman PC Chris Miller. The idea behind PACT is to try to discover what the problems of our village are and to find solutions.

From these first meetings it is clear that the major issues causing concern are the lack of parking for private vehicles often leading to petty vandalism, and dogs which are left to roam on the streets with the consequent problem of dog faeces on our pavements and also on the playing field. This together with the general untidiness through litter, weeds left to grow and poorly maintained grass areas make members of our community very angry.

We can all help to improve life in Hothfield. We already have our village orderly picking litter on a weekly basis supported by local volunteers who undertake, without payment, a litter pick of their area. The rest of us can do our bit by using the litter bins at the Post Office, the MUGA and the Youth Shelter. Clearing weeds is more of a problem. Ashford Borough Council and Kent County Council have a rota for weed clearing on footpaths and by the roadside. For example Kent Highways undertook a weed spray through the village on June 27th and the contractor has agreed to follow this up with a second spray in September. Hopefully this will help. If it doesn't, tell the Parish Council.



The problem of dog faeces and dogs allowed to wander is difficult to resolve if owners are not prepared to control their dogs and to clear up the mess they make. Plastic bags are available free of charge from Mrs Perkins of Beech Drive and also from the village Post Office. The Dog Warden has also agreed to visit Hothfield once a fortnight to offer help and advice. He will park his vehicle at the Children's Centre.

Lastly a word of thanks to the many folks who do help keep the village tidy by mowing the grassed areas, keeping their dogs under control and generally caring for Hothfield. There is more to do and it is really important to tell the Parish Council what you think either by coming along to one of our meetings held on the second Monday of each month at 7pm, except in August and December, or by attending the next PACT meeting. Details to follow.

SMARDEN'S MACMILLAN DAY - Marilyn Ferris 01233 770353

Saturday 27 September from 10 am to 4 pm at Smarden Charter Hall

- Coffee, lunch, afternoon tea
- Super Raffle
- Plants and Produce
- Face painting
- Books, Jewellery, Ceramics, Glass, Gifts
- Manicures
- Reflexology, Reiki
- Indian Head Massage

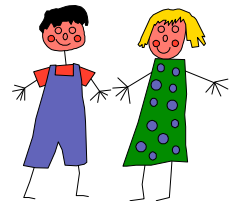


HOTHFIELD VILLAGE HALL – Phil Holloway



Well here we go again. Another month over and the Village Hall is still there. The Family BBQ day was very poorly supported. I am sorry to say the weather was against us but those that did attend I hope had a good time. The outcome of this due to the donations of food for this event we managed to raise over £100 so some good came of it. I would like to thank all those who helped on the day for all the hard work that was put in.

There is another BBQ on 6 Sept for all the family there is also some activities being supported by the children's centre. On this day we have a full day as in the evening there is a ploughman's and race night the cost for this is £3.50 per person. This is always a good night so come one come all, all welcome. Tickets are on sale in the shop so there is plenty of time. Lets make this a fun day for all. The old favourite the jumble sale is on 20 Sept this is always a good day and provides much needed funds to keep the hall running. **See Phil's advert later in the Newsletter. Ed.**



Just to let everyone know that karate has now moved to a Wednesday night only now and is on for two hours not one. If anyone is interested in joining please turn up on the night and talk to Pippa. All the other clubs that use the hall would be pleased to see new people so go along and see what is on offer.

The following events are on over the next few months please make note

- 6 September Family Fun Day
- 6 September Ploughman's with Race Nite
- 20 September Jumble Sale
- 11 October Harvest Supper
- 15 November Ploughman's with Race Nite
- 31 December New Year's Eve Party



As always in Hothfield one of the biggest problems is communication we always hear 'I didn't know it was on'. Well we hope to change that and with the help of the Newsletter let everyone in the village know what is going on.

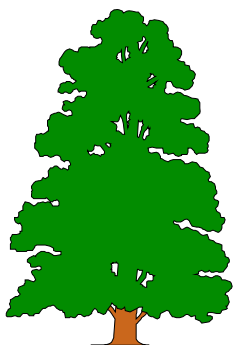
Well that is enough from me for now. Do not forget to tell us what you want in your Village Hall. Phone 01233647266, mobile 07765367044, email hagsos@msn.com or just tell to any of the Village Hall Committee.

KENT WILDLIFE TRUST - Ian Rickards

The Future of the Triangle. Many of you will be aware of the triangle of land that sits between Hothfield Common and the A20. The main car park for the reserve sits on it, and so does the public toilet block. Beyond this, due to the antisocial behaviour that occurs there, many people have regarded this patch of land as a 'no-go area'. The Kent Wildlife Trust, with support from Ashford Borough Council and the Heritage Lottery Fund are doing their part to remedy this situation – with the aim of making this whole area a haven for wildlife and a safe place to walk and enjoy the countryside.



We have just improved the fencing surrounding the Triangle, including putting a fence around the car park. There will also be a barrier installed at the car park entrance, to prevent night time access. The next stage is to re-introduce grazing, which has not been effected on this area for close to a century.



At one time, the Triangle would have been a continual part of the common, with open areas of heathland. Our aim is to nurture the huge veteran trees, and at the same time control the growth of invasive sycamore. With careful control of the grazing management, the Triangle will develop into a wooded heath; this unique habitat is characterised by large spaced out trees, with an understory of heather, grasses and flowers. Another target of this management will be the control of scrub and tall vegetation directly around the toilet block – we hope this will make the whole area feel safer and more accessible.

To find out more about the work of the Kent Wildlife Trust, or how to get involved, either ring us on 01622 662012 or visit our website www.kentwildlifetrust.org.uk

ST MARGARET'S CHURCH NEWS – Sue Starkings

www.g7churches.co.uk

Church Services for September are as follows:

- Sunday 7 September 9.30 am Eucharist Service
- Sunday 7 September 4 pm Songs of Praise
- Sunday 14 September 11 am Eucharist Service
- Sunday 21 September 11 am Service Village Hall (breakfast at 10.30)
- Sunday 28 September 9.30 am Parish Communion BCP

Church News

The 'G7' 'Back to Church Sunday' 7 September.

'Back to Church Sunday' is your church's open day. So we warmly invite you to bring your friends and neighbours, meet other villagers, have a coffee or tea, take an opportunity to look at registers from the past and perhaps take a moment to reflect and be still.



There will also be a special 'Songs of Praise' in which we will sing favourite hymns and pray for our villages. Hothfield 4pm (Church open from 10.30am-noon and 2-4pm).

We look forward to seeing you.





HARVEST CELEBRATIONS

This year, our Harvest services will be at *Hothfield on Sunday 12th October* – details will be in next month's newsletter but put this date in your diary. We will also have a harvest supper in the village hall on Saturday 11 October.

ALPHA

...kicks off during the week beginning Monday 15 September. This stimulating course lasts for several weeks and explores the Christian faith and what it means to be a Christian in the world today. The evenings all begin with supper and take place at three venues: Hothfield Children's Centre (Mondays); Egerton School (Tuesdays); and Charing Barn (Wednesdays).

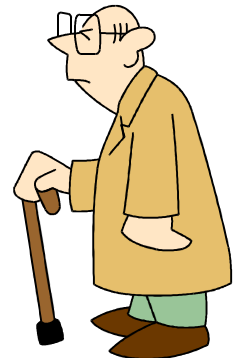
Complete a registration form (which can be found in our parish churches), or contact the co-ordinators direct for more details or to register: Sue Starkings (Hothfield Children's Centre) 01233 643497, Russell Anderson (Egerton School) 01622 891991 or Caroline Asteraki-Speer (Charing Barn) 01233 714028

COULD YOU BE AN EXPERT PATIENT?

A free course for people living with long term conditions

Do you have a long term or chronic illness and want help to take more control by learning new skills to manage your condition better on a daily basis? Well, help is available through the Expert Patient Programme, whether it is dealing with pain, coping with feelings of depression, relaxation techniques or exercise and planning for the future.

There are no miracles on offer here, but plenty of experience and common sense to share with others who all have something in common. The Programme consists of a series of meetings, one session a week for seven weeks, at a convenient location. Trained tutors will lead discussions to the various difficulties people find they have to cope with. All the tutors themselves have a chronic condition, so they understand the problems.



Claire Doran, Expert Patient Programme Manager, is compiling a register of people who wish to attend a morning course from 31 October until 12 December at Sure Start Children's Centre in Hothfield. Please contact Claire on 01304 216857.

CHARING PRE SCHOOL – Julie Young



Welcome to the Autumn Term here at Charing Pre-School. Our topic this term is Independence to help us think about our feelings, sharing with our family and friends, being healthy and dressing ourselves. We have lots of lovely new toys to play with, to help us with our learning.

We have a few places available for children from the age of two years to five years. Following a survey of parents last term, our opening hours will be 15 minutes earlier, so there is less waiting time after primary school starts. This means we also finish the day 15 minutes earlier, giving extra time to collect siblings at school.

Open 9.15am to 2.45pm Mondays to Fridays during school term time. Come to visit us at The Pavilion, Charing Playing Fields, Charing. Ring 01233 712180 (Pre-School hours) or e-mail: charingpreschool@googlemail.com



Tickets £3.50

Each

Family Fun Ploughmans

ON THE 6TH

SEPTEMBER



BBQ Day



Race Night

Bring your own Drink

STARTS:- 12AM

FINISHES:- 4PM

RUN BY

HOTHFIELD VILLAGE

HALL &

CHILDREN CENTRE

ALL CHILDREN UNDER THE AGE OF 18 MUST BE WITH THEIR PARENT

Tickets on sale

at the shop

STARTS:- 7PM

SWING? LATIN? BLUES? TRAD JAZZ? JAZZ STANDARDS?

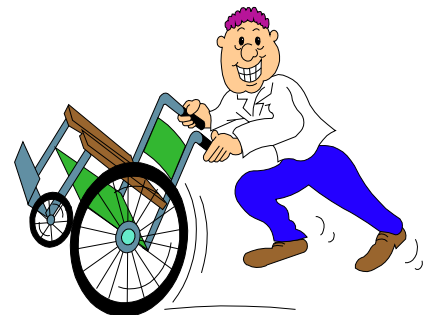


All this and more from the renowned Norton Knatchbull Jazz Bands.

The Ashford Youth Jazz Orchestra, following their European tour, Norton's Dixie Kings and The NK Jazz Quintet. At Boughton Aluph on Saturday 6 September at 7.30pm. Details from Frank Edwards (01233 640357) or via www.allsaintsba.org.uk

CAN YOU HELP?

The Friends of the William Harvey Hospital are looking for new volunteers to man their foyer shop at the hospital. If you have a few hours to spare during the week and feel able to work in our shop please call Brenda or Sue on 01233 633331 ext 88269 or 88394 for more information.



And if you would like to find out more about volunteering opportunities, why not contact the Ashford and District Volunteer Centre at Berwick House, 8 Elwick Road. Tel 01233 665535 or email at vbbase24@yahoo.co.uk The Centre is open 9am to 3pm Monday to Friday. Why not give them a call, whether you are looking for a regular commitment or just ad hoc volunteering. And whether you would be interested in working with animals, people or things, they will help you find what you want! - Ed.



THE NEWSLETTER & THE PARISH COUNCIL – Chris Twydell

In the last issue I referred to the discussions at the Parish Council meeting and the decisions taken by the Parish Council concerning this Newsletter. The great news is that that decision has been changed and we are now on track as before as you can see. So its 'business as usual' and I am more than happy to continue to edit the Newsletter. Many thanks to lots and lots of people who expressed their views about the earlier decision.

RECYCLING

A reminder that the Ashford Recycling Centre in Brunswick Road, Ashford TN23 1EL is open on Monday to Saturday from 8am to 4.30pm (Sundays and Bank Holidays 9am to 4pm). Late night opening from April to September until 8pm. The Centre accepts a whole range of materials:

- | | | | |
|--------------------------|------------------------|---------------|-----------------|
| Domestic Batteries | Low Energy Light Bulbs | Appliances | Pesticides |
| Cans | Foil | Soil/rubble | Plastic bottles |
| Car batteries | Garden waste | Spectacles | Waste |
| Cardboard | Gas bottles | Textiles | |
| Printer/Toner Cartridges | Glass | TVs/Monitors | |
| Engine oil | Metal | Tyres | |
| Fridges/Freezers | Mobile phones | Wood Asbestos | |
| Fluorescent tubes | Paper | Chemicals | |
| | Shoes | Furniture | |
| | Small Electrical | Paint | |



Ashford Council also offers a Bulky Item Collection collecting bulky domestic waste including furniture, white goods, electrical appliances and most other items that you would expect to take with you if you were moving house. (they will not take DIY material, or builders waste). There is a minimum charge of £20, payment required at time of booking. The overall cost will be based on the number and volume of items being collected. To book call 01233 331111. Ed.

HOTHFIELD NEWS

All contributions, letters, comments etc for the newsletter should be sent to the Editor, Chris Twydell, at 37 Coach Drive by the 15th of each month or by email to hothfieldnewsletter@gmail.com 01233 635 372. If you would like to receive a copy of the newsletter by e mail, or would like a large print copy, please let me know. Thanks.



AND FINALLY.....

..... its not just coincidence that the words common, community, and communication each start in the same way. The more we communicate, for the common good, the greater the chance of developing our community. **So come on all those people who have not yet contributed to the Newsletter – let's hear from you!**

TURNING BACK THE CLOCKS IN HOTHFIELD

On 25th October come to the Village Hall to see the past, and present in Hothfield.
The Hothfield History Society proudly presents 'Hothfield Then & Now'

Have you noticed that the 'Hothfield' village sign has gone from the end of The Street? Fear not as the Parish Council has rescued it from the bin after Kent Highway Services removed it.



What would *you* like to do with it now? The sign can be repainted and re-used so the Parish Council would like your suggestions.

Come to the exhibition and let us know your ideas.

The History Society will also be showing photographs of the carnivals that the Villagers used to hold. These pictures show two scenes from 1979 – were you there?



The event at the Village Hall will include a display of how Hothfield was involved in both World Wars. Nissen huts were built on the Common and along Waterfall Lane which housed soldiers and Prisoners of War. Hothfield Manor was also used by soldiers but was sadly demolished in 1954.



Hothfield Manor seen about 100 years ago. Demolished in 1954 despite being Grade 2 listed.

Do you remember the Manor?

Did you live in the Nissen Huts after the war was over? – if so then the History Society would like to hear your tales.

Write to us at:
Hothfieldmemories@hotmail.com

Were you ever a passenger on the train from Hothfield Halt? This picture shows the Halt after it had been downgraded from a full station. The site is now Tarmac's plant near Westwell and all the sidings have gone.



Photo: Chris Rogers

By comparison this was the view of Beechbrook Farm a few years ago when the high speed line from the Channel Tunnel was being built.

Photo courtesy of: Alan Newble Photo Resource: www.newble.co.uk



Beechbrook Farm has now been returned to fields where sheep graze. Yonseas Farm, on the other side of the A20, was completely removed but some of the old buildings have been rebuilt at the Rare Breeds Centre at Woodchurch.

**We will create an old style school where children will be able to experience using slates for writing or drawing on, and you will be able to see the model of the village. Displays will also include: the Church, the first Village Hall, the Common and the Workhouse (now Lakeside) ...
... and much more ...**

**The history event will be held in the Village Hall on 25 October, from 11:00 to 16:00
It will be free to enter and there will be refreshments.
Please send your stories from Hothfield past and present to us at:
hothfieldmemories@hotmail.com**