



Hothfield News

October 2008

The Monthly Newsletter by and for the Hothfield Community

WELCOME

An upbeat edition with final details of the Hothfield History Exhibition on 25 October, news about the Play Area, exciting updates from the Children's Centre, an update on Hothfield Common, news of events at the Village Hall and much more. Who says Hothfield is a quiet little place! News too about the Hothfield Village Appraisal and the number of responses received far. Read on!



HOTHFIELD PARISH COUNCIL – Shirley Whittington

After the August break the Parish Council met again as usual on the second Monday in September. We were pleased to welcome two members of the public, two from our village and two representatives from Ashford Borough Council and Kent County Council respectively.

Ann Davis from the Borough Council talked to us about the development of the children's play area. In October Angela Lorimer from the Kent Children's Fun Team will be carrying out a programme of consultation with parents. She will come along to Breakfast Club at the Children's Centre and to meetings with parents. She will also try to attend any of the activities for children and their parents that are held in the Village Hall. Angela is anxious to canvass the opinion of our community before she draws up plans for the proposed play area. Therefore, for once, this is our opportunity to influence what happens in our village.



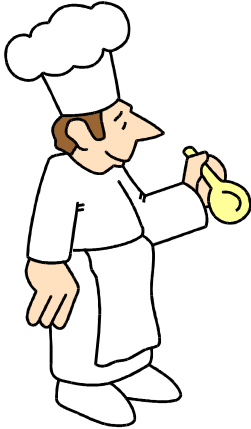
At our meeting we also considered the possibility of renewing the bus shelter on School Road, whether to retain the telephone box, again on School Road, or to have it removed permanently as it has been vandalised twice recently and how best to maintain the playing field and the area around the Children's Centre. The Parish Council would also like to provide a Christmas tree placed in a prominent position in the village. Please let us know your views. Don't forget that there is a Suggestion Box at the Children's Centre. We really do want to hear from you.

Many thanks to those of you who completed the village questionnaires. By the end of August 146 questionnaires were received and have been sent away for analysis. We expect to get the initial results by the end of September. During October we will be reviewing the results with the aim of producing a village plan for open discussion and debate. Most of the questionnaires were returned in their envelopes and have not been opened locally. The analysis will let us know which of the questionnaires was first out of the box giving us the winner of the £100 prize. Understandably not everyone was able to complete the questionnaire and one reason given was "at the age of 91 my 'appraisal' only lasts as far as tomorrow!"

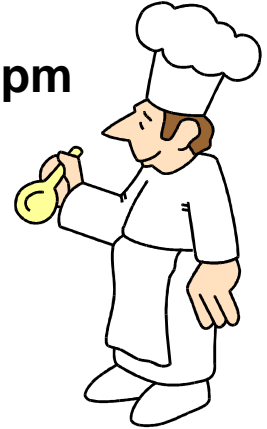


HARVEST SUPPER

At Hothfield Village Hall on
Saturday 11 October, 7.30 to 10.30pm



Tickets £5 (children 10 and under £3)
available from the Post Office until 7
October.



Tickets limited to 100

Please bring your own drinks and glasses and show tickets on entry.

There will be a raffle during the evening.

More details from Sue Patten or the Village Hall Team

IS YOUR DRIVING LICENCE OUT OF DATE? - Ed

If you have a driving licence photocard, did you know it expires after ten years? The new licences were introduced about ten years ago, so its likely most of those will need replacing fairly soon. Check the date on yours, and get it renewed if it is running out. An out of date licence could result in a very substantial fine!



VILLAGE DIRECTORY – HAVE YOU GOT YOURS? - Sheila Flynn

The Village Directory is a local and free monthly magazine delivered by Royal Mail to every rural home around Ashford and Tenterden. If you have not received your copy by the end of the first week of the month, please call into Hothfield Post Office to pick up your free copy. You can also view it online at www.thevillagedirectory.co.uk.



With support from village communities and local businesses, The Village Directory has become a valuable 'residents handbook' providing quick and easy access to the services you need from local people you can trust. Your input is therefore needed to ensure its continued success so please contact Debbie Allen on 01233 720 488 about any of the following:

- Local businesses or services you would recommend
- Articles you would like to see or even supply
- Information important to the community, for example village hall details
- Local events, it's FREE to advertise community and fund raising events or charity ventures

HOTHFIELD HISTORY EXHIBITION – Village Hall on 25 October

Information – Chris Rogers

Thank you to everyone who has responded so far to our request for stories and pictures from Hothfield's past. The Exhibition is expanding every day! Even if we don't use your stories or pictures then everything we receive will be kept in the History Society's archives for future reference.

Did you know that there was an area on the Common for tanks to practice going through the boggy soil, and practise trenches for warfare? We're pleased to confirm that Kent Wildlife Trust will be coming to the Exhibition to show us pictures of how the Common has changed and how they manage it now.

The Kent Family History Society will be coming with their records of family names. You will be able to look up your own family tree for free at the Exhibition on Saturday 25 October from 11am to 4pm.

There will also be vintage vehicles and some World War II helmets, gas masks and military equipment to look at. Hothfield was a significant billet for lots of soldiers and tanks were parked under the trees along Coach Drive.

The supporters of Beechbrook Farm are coming with their display of how the farm was before the Channel Tunnel Rail link was built, and what they intend to do with it now.

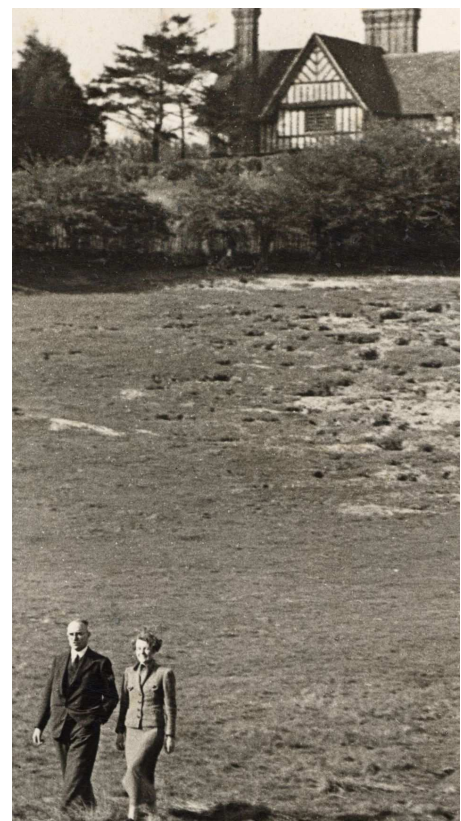
There will also be displays from Sure Start, G7Churches and the Parish Council. There will also be old maps, postcards and books to buy about Hothfield's History.

Entry to the Exhibition is free for everyone, so please come along and see how your village looked in the past.

You might also be able to help us to solve some mysteries:
Who are the people in these photographs?

The one on the right is at Tutt Hill
(courtesy of Kent Archaeological Society)

The one below was taken in the 1930s on the A20



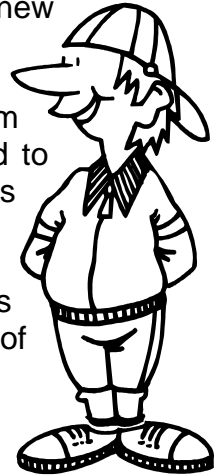
Do you know the connection between Hothfield and Napoleon?

We look forward to welcoming everyone to the Exhibition on Saturday 25 October

HOTHFIELD PLAY AREA – Angela Lorimer

The new Hothfield play area is getting nearer! You have all been updated on the new play park for a while but now we are starting to get nearer.

My name is Angela Lorimer. I work for Kent Children's Fund Network (KCFN) and I am going to be visiting local groups for children, young people and families in Hothfield to find out what you would like to have in your new park. I will be visiting the children's centre and the park to speak to families to see what you want. The money has already been secured from the Big Lottery Fund and I am working with Ashford Borough Council to make sure you get what you want in the park. The park is estimated to be completed in November 2009. We will be updating on the progress of the park in this newsletter so please look out for it!



If you would like any further details please email me at angela@kcfn.co.uk or phone 07984 284 734

KENT WILDLIFE TRUST - Ian Rickards



Work is progressing at Hothfield Common. We are continuing to improve all the external fencing, which will leave us with a new fence around all the vulnerable parts of the common. We are improving access from the village end of the Common, with the entrances behind the old school both served with new kissing gates suitable for buggies and wheel chairs.

We are also starting our winter task programme. If you have ever wanted to get more involved with the conservation work carried out on the common, the Kent Wildlife Trust will be running regular Sunday and Tuesday tasks. The work will range from fence repair, installing gates, removing birch from the bogs and many more tasks that are essential in improving wildlife across the reserve.

Sunday Tasks – Sunday tasks start at 10am and go on until 4pm. Heathland Management on Hothfield Common. Sundays 2 October, 9 November and 14 December. Meet at the Football field car park.

Weekday Tasks – Weekday tasks start at 9am and go on until 4pm.

Practical conservation on Ashford Reserves each Tuesday. Contact the Warden for more details management

To get involved, you just need to bring lunch, drink, waterproofs, sturdy footwear and enthusiasm!!!! To find out more, contact Ian Rickards on 07889 737839 or Kent Wildlife Trust on 01622 662012.



HOTHFIELD VILLAGE HALL – Phil Holloway

Well here we go. Another month ends and we are still moving on. The two BBQ days that we had were not as good as they could have been but the weather was against us. Due to the donations of food from members of the village and members of the village hall committee we were able to show a profit.

The fun day held in the hall on 6 Sept went well with 52 adults and 49 children attending all the events that were being held. In the evening there was the ploughman's race night this was attended by about 35 people and a good time was had by all. We hope to build on this and try to provide more events for the people of the village.



OCTOBER 2008

- **Harvest Supper, 11 October**, in the Village Hall (*for details, see advert elsewhere in the Newsletter - Ed*).
- **Hothfield Then & Now History Exhibition, 25 October**, between 11am and 4pm in the Village Hall. Memories, photos and descriptions of Hothfield in the past. Free entry, refreshments.

NOVEMBER 2008

- **Race Nite with Ploughman's Supper, 15 November**, in the Village Hall. More details later.



DECEMBER 2008

- **Quiz Night, 13 December**, in the Village Hall, 7pm. A Quiz with a Christmas theme. £2.00 per person, please bring own food and drink.
- **New Years Eve Party, 31 December**, in the Village Hall. *Hothfield Village Hall is proud to Present Sarah O'Shea for a full evening's entertainment. 7pm till 1am All welcome Full bar Tickets £10 per person. No under 18s without a parent. This event will have a limited*

number of tickets book now so you don't miss out on the event of the year why not see in the new year with your friends in the village hall close to home no driving so have a drink.



Regular Events

- Every Tuesday - **Short Mat Bowls**, 7-10pm in the Village Hall.
- Every Wednesday - **Martial Arts Group**, 6-8pm in the Village Hall.

Every other Thursday - **Merry and Bright Club**, afternoons in the Village Hall.

HOTHFIELD CHILDREN'S CENTRE - Heather Curtin

The Children's Centre is looking for volunteers to help plan and decide on activities for the Children's Centre. The Volunteer Working Group will be getting together on Monday mornings from 11am to 12 noon and everyone is welcome. There will be a free crèche staffed by trained staff to look after younger children. This is a great way for Mums and Dads to meet other parents and to learn some new skills as well as having a whole lotta fun! If you are interested, just turn up any Monday morning or contact Heather or Janet on 01233 622 296.



PARENT/CARER AND TODDLER DROP IN

- Messy Play Activities
- Songs to finish
- Healthy Eating Break
- Toy Library

Every Thursday fortnight from 10.00am-11.30am at the Children's Centre, Hothfield.

The Toy Library will be available at every drop-in.

All Welcome!

For more information please contact Heather or Janet on 01233 622 296

ST MARGARET'S CHURCH NEWS – Sue Starkings

www.g7churches.co.uk

Church Services for October are as follows:

- Sunday 5 October 9.30 am Eucharist Service
- Sunday 5 October 6 pm G7 Evensong
- Sunday 12 October 11am Harvest Family Service
- Sunday 19 October 11 am Service Village Hall (breakfast at 10.30)
- Sunday 26 October 9.30 am Parish Communion BCP



Church News

G7 EVENSONG

The last G7 Evensong of 2008 will be at Hothfield on Sunday 5 October at 6.00pm. Our guest preacher will be Jonathan Oliver - an Egerton lad – who has been working as a teacher in the Ethiopia Kale Heywet Ministry Training College since December 2006. He is helping train leaders in the Kale Heywet Church which is currently 80 years old but comprises 6 million members - with the challenges that accompany this situation and also the tough environment in which they live.

Jonathan's love for Ethiopia has many origins. His wife, Sara, was born in Jimma, Ethiopia, to a 'jungle pilot' family working for Mission Aviation Fellowship. She and Jonathan went out to Ethiopia to teach at the Rainy Seasons Bible School for six weeks. They were much loved out there and were asked to work in Ethiopia on a more permanent basis. They travelled out there in January 2006.



After a year's language training in Addis Ababa - learning Amharic with its 280 letter alphabet - the family, then including Alice and Edward, were posted to Dilla in the Rift Valley. Now with the latest addition, Rosie, Jonathan and Sara, Alice and Edward are on leave until 7 October, giving us a great opportunity to hear Jonathan speak about his work.



There will be coffee and biscuits after the service, when Jon will be available for questions. It is hoped there will be some audio-visual aids available, too! Do join us.

HARVEST SERVICES

This year, our Harvest services will be at Hothfield Church on Sunday 12 October at 11am. We will also have a harvest supper in the village hall on Saturday 11 October.

To find out more information about the form of service in each case, please look at the list of services on posters in our churches, or on the website www.g7churches.co.uk

LIVING WITH A LONG TERM ILLNESS

Do you live with a long term or recurring illness? Why not take control? The Expert Patient Programme is a self-management course for people living with a long term or recurring illness and facing issues such as fatigue, pain, or depression. The course, led by people who are themselves already living with a long term illness, is coming to Hothfield from 31 October to 12 December. For further details and to register, contact Claire on 01304 216857, or email claire.doran@ekcpct.nhs.uk.



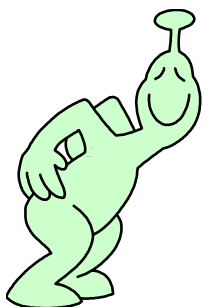
ALL SOULS

There will be special services to commemorate those in our group of parishes who have died during the past two years, together with others whose remembrance is requested. The services will all be held on Sunday 2 November at 4pm. If you would like someone remembered then please contact Rev Richard Webb Tel: 01233 714663

REMEMBRANCE SUNDAY

This year, Remembrance Sunday falls on the 9 November. Special services of remembrance will be held throughout our group on that day. Please look at the list of services on posters in our churches, or on the website www.g7churches.co.uk

HOTHFIELD NEWS



All contributions, letters, comments etc for the newsletter should be sent to the Editor, Chris Twydell, at 37 Coach Drive (01233 635 372) by the 15th of each month or by email to hothfieldnewsletter@gmail.com. **Please send contributions only to this address – those sent to our private email account sometimes get caught by anti-virus software!** If you would like to receive a copy of the newsletter by e mail, or would like a large print copy, please let me know. Thanks.

AND FINALLY.....

.....there is only one thing more painful than learning from experience and that is **not** learning from experience!