

# HOOTHFIELD NEWS



## Dates for your Diary

Hothfield Parish Council next meeting 7pm 11th Sep Hothfield Village Hall

History Society Exhibition 10am 27th Sep St Margarets Church (see page 6)

## Bygone Days of Hothfield – Saturday 27<sup>th</sup> September



2

The church at Hothfield is easily our largest and oldest historic artefact, with parts of it dating back to 13<sup>th</sup> Century, and maybe even Saxon origins. It will be open on 27<sup>th</sup> September from 10am to 4pm for everyone to come and look around. Entry is free.

Inside the church is the colourful marble tomb of the Tufton family who lived at the Hothfield Place estate for centuries, as well as stained glass windows to admire, and the organ which originally stood inside the Manor. There will be displays about the nearby Manor (demolished in 1954), the stables of the former estate and its grounds, and some of the notable characters buried in the churchyard outside.

On the bend on Church Lane is the tree hit by a doodlebug during WWII which caused damage to the church and destroyed almost every window on the north side. There will be a few photos of the army occupation of the nearby stables, as well as the Norland nurses briefly evacuated from London to the Manor before the army moved in.

John Coles will kindly be displaying some of the many items found by metal detector in the Parkland of the Manor including coins, military cap badges, belt buckles and tokens paid to workers of the estate. Most of his items have not been seen before and he'll be on hand to talk about them. John will also have bits of the Hurricane that crash-landed in the park following a dog-fight with German fighters.

The Friends of St.Margaret's Church will be providing homemade cakes, savouries and refreshments to buy and enjoy in the historic surroundings. The church and toilet is accessible to disabled people, however, the belltower is reached via a winding narrow staircase.



Entrance hall of Hothfield Place taken in 1953 prior to demolition (courtesy KCC)



The colourful tomb of the Tufton family which stands next to a 13<sup>th</sup> Century column



# Hothfield Parish Council

For full minutes of meetings of Hothfield Parish Council, please either see the noticeboard outside the village shop, or visit [www.hothfield.org.uk](http://www.hothfield.org.uk)  
PLEASE NOTE: The email address for the Parish Council is [parish.clerk@hothfield.org.uk](mailto:parish.clerk@hothfield.org.uk)

## HPC Meeting Summary July

- 1) Esso Garage: The new lighting is too bright & litter is a real problem. Follow up action agreed.
- 2) Coronation Orchard update.
- 3) Muga update.
- 4) Footpath/Hedges: A number of properties in the village have overhanging foliage on paths. Follow up action agreed.

## Coronation Orchard Update

The majority of trees in the Coronation have flowered and set fruit.

Another tree has been attacked, making three in all. One remains in situ and the other two, which were uprooted as well as broken in half, are in a councillor's garden and are recovering. HPC has asked Aspire for those trees planted in the playground to be moved as soon as practicable to the other side of the nearby footpath from the main street.

The part of the orchard planted in the West St entrance to The Common is being out grown by 2 metre high bracken. We request villagers help by pulling out the bracken.

## Charing Scouts

What a fabulous term we've had! All sections have had huge amounts of fun while learning new skills. One of the highlights was our first joint beaver and cub scouts camp. We had 42 young people sleeping in proper canvas tents. We were helped by my son Rich. He has a world-wide social media following and posted a photo of the campsite. There were hundreds of comments from all over the world saying how lucky our young people are. Nobody could remember seeing tents like these for many years. Some of the tents looked rather old when I joined the group back in the 1980s, but we look after them and repair when necessary. The camp was nonstop fun with teamwork and sharing new skills. Well done to all our leaders. I'm still hoarse following the campfire.

Our explorers (aged 14-18) demonstrated their superior scouting prowess by winning the district sand castle building competition..... Every four years Kent Scouts organise an International Jamboree. It is a fabulous opportunity for scouts and explorers to experience a huge range of activities and meet scouts from all over the world. It's happening at the beginning of August at the county showground and promises to be spectacular.

Terry Group Scout Leader 07748818660

## Hothfield Village Hall

Bookings via  
[www.hothfieldvillagehall.co.uk](http://www.hothfieldvillagehall.co.uk)

### Regular weekly events

Mondays @ 16:30

Target Shooting School  
[www.targetshootingschool.co.uk/ashford](http://www.targetshootingschool.co.uk/ashford)

Tuesdays @ 19:00

Bowls Club  
Contact: John 07492 862974

Wednesdays @ 17.30

Koba Dog Training  
Contact: justine@kobadogtraining.co.uk

Thursdays @ 10.30am

Dance Visions Zumba  
Contact: [bookwhen.com/dancevisions](http://bookwhen.com/dancevisions)

Fridays @ 18.30

Bowls Club  
Contact: John 07492 862974

## Hothfield Village Hall (KCHFT Health Visiting Team)

Tuesday Drop-in Session Weekly 9.30am to 12.30pm

These breastfeeding drop-in sessions are supportive, social, and welcome all pregnant and breastfeeding women and their families, including partners. Trained Breastfeeding Champions from the local Health Visiting Teams will be able to provide information and help if you have a breastfeeding concern. Get more information and support for parenting under-fives at [www.kentcht.nhs.uk/kent-baby](http://www.kentcht.nhs.uk/kent-baby)

Pigs and tree pipits have returned to the reserve. Hazel and Beech, the pair of Large Black pigs who in the winter made their mark on the small compartment below the concrete causeway, returned to that fenced-in compartment in mid-July continuing, as Area Manager Ian Rickards says, 'their quest to snuffle across the site, creating bare ground, rooting up bracken and creating lots of opportunities for our wildlife to capitalise on'.

To the delight of everyone, keen observer Val Butcher spotted a tree pipit, *Anthus trivialis*, a welcome rare migrant from Saharan Africa. It is on the UK conservation Red List as a species needing urgent action and is protected by The Wildlife and Countryside Act 1981. Spotted by Val in 2020 and sporadically since then, we hope it will breed here. A ground-nester often producing a second brood, it is one of the birds that walkers are helping to protect by keeping dogs on leads through the summer – thank you to everyone.

Engineering around water has been a key task this dry spring and early summer; adding faggots of brushwood from on-site clearance work to leaky dams, fencing ponds that need protecting, blocking off a small water course in Bog 4 so the water could flow through a new channel to rewet the inner part of the bog and other hydrological diversions. Other work by the volunteers, aided one day by a corporate team, was scything bracken, brush cutting, tree-popping, more fencing, and path maintenance.

After last year's insect drought, volunteer David Rayner was delighted to see the flowers of ragwort, *Jacobaea vulgaris*, with more visitors this July. He says 'ragwort plants are the main larval food plant of the beautiful cinnabar moth. The flowers, produce unusually large amounts of nectar and pollen which means that they also attract and provide food for a very wide range of pollinating insects. In a single session David identified the following at the golden banqueting table: *Nowickia ferox* (a tachinid fly), small copper butterfly, red soldier beetle, jewel wasp or ruby-tailed wasp (there are several similar species), *Eriothrix rufomaculata* - a bristly parasitic fly whose larvae develop and feed inside moth larvae, 7-spot ladybird, *Lygus pratensis* (plant bug), thick-thighed beetle (male) and green-eyed flower bee *Anthophora bimaculata* which is a heathland specialist.

The spectacle of the cottongrass, *Eriophorum angustifolium*, dancing in the wind in the top bog, the most acid of the bogs, has been commented on a lot this summer. The gleaming white blobs are fairly tough filaments surrounding the small seedheads that develop from the discrete green and brown flowers typical of the sedge family that this plant is a member of. 'Sedges have edges' so stems are three-sided (although in the case of cotton grass, only at the top). It is wind-pollinated. One of four native species, it is native in a circle (transboreal) around northern Europe, Asia and America, surviving



the harshest (usually cold and wet!) conditions, its tough rhizomes spreading vigorously where other plants won't grow. So it's a good indicator of where not to walk as it likes open, wet, peaty bog. The seedheads have been used to stuff pillows and were collected by children in Scotland for wound dressing in the First World War, but the fibres are too short to be spun into thread. It is a food plant for North American West Coast Nations. The scientific name is from the Latin for *wool-bearing and narrow-leaved*. Cottongrass (a sedge not a grass) is the county plant of Manchester but is very uncommon in Kent and the South-east. It is part of the very specialised flora that makes Hothfield Reserve such a significant place.

Margery Thomas



## An update from Katie Lam MP

As everyone in the Weald gears up for garden parties, village fêtes, strawberries and cream – and perhaps a glass (or two) of English wine for the more indulgent among us – it feels like summer is finally here.

Come rain or shine, it's been another busy few weeks both in Parliament and across the constituency. It's a real privilege to meet so many people quietly doing extraordinary things.



I've had a great time visiting various primary schools over the last few months. It seems like everywhere I go the enthusiasm of the pupils and dedication of the staff are clear to see. I want to visit every school in the Weald, so if I owe you a visit please get in touch. I usually speak a bit about being an MP and answer any questions about my role, our political system and public service more generally.

It was a pleasure to join the Big Cat Sanctuary's 25th anniversary festivities in Headcorn. A bit different from the farm animals I usually meet – but just as impressive! A big thank you to the Managing Director Cam Whitlock for showing me around. It's a brilliant day out.

In Westminster, I was joined last month by some fantastic work experience students: Imogen, Alex, and Perla. It was encouraging to see such switched-on, engaged young people asking thoughtful questions and sharing their ideas. They also had the opportunity to ask me whatever they wanted, from how I got my start in politics to my dog Bailey's favourite activity!

I'm always on the lookout for young people interested in politics. This summer, I have a great group doing voluntary placements in my Campaign Office in Tenterden. This role would suit someone keen to gain hands-on experience in a political office and on the campaign trail.

You can join me for any or all of July, August, and September. If you, or anyone you know, might be interested, please get in touch with my Campaign Manager Alex at [campaigns@katieforkent.com](mailto:campaigns@katieforkent.com) as soon as possible.

And finally, I was proud to speak up in Westminster for English wine production, in the middle of English Wine Week. Kent's vineyards are world-class, and I'll keep pushing for the recognition and support they deserve. I hope you'll join me in supporting our Kentish producers over the summer by buying local wherever possible!

# HOTHFIELD POST OFFICE STORES

Sunday	0900 To 1200	Post Office closed
Monday	0900 To 1300    1400 To 1800	Post Office closes 1730
Tuesday	0900 To 1300	
Wednesday	0900 To 1300    1400 To 1800	Post Office closes 1730
Thursday	0900 To 1300    1400 To 1800	Post Office closes 1730
Friday	0900 To 1300    1400 To 1800	Post Office closes 1730
Saturday	0900 To 1300    1400 To 1800	Post Office closes 1230

## Educational Grants



If you live in Hothfield and think that Hothfield Educational Foundation could help with your children's education, or know of someone else who could benefit, please do contact us via [HothfieldEducation@gmail.com](mailto:HothfieldEducation@gmail.com)

# BYGONE DAYS



# OF HOTHFIELD

**Saturday 27<sup>th</sup> September**

**St Margaret's Church, Hothfield TN26 1EL  
10am to 4pm**

**An exhibition of the history of our  
beautiful 13<sup>th</sup> century church,  
Hothfield Place and its estate, and the  
Lords and Ladies who lived there**

Delicious cakes, savouries and  
refreshments at the church café

Visit the belfry  
(for the fit and able  
over 12 years young)

**Free entry**

[www.hothfieldmemories.org.uk](http://www.hothfieldmemories.org.uk)

 **Friends of St Margaret's Church, Hothfield**



## The Friends of St.Margaret's Church

7

On Saturday 21st June, the Friends of St Margaret's Church welcomed visitors to hear a lively concert performed by the Ashford Concert Band.

Refreshments were served by the Friends during the interval, and as the temperature outside was very hot, the cool interior of the Church was much appreciated by all.



### Asian Hornet update.



DEFRA has renamed this hornet. Officially it is now known as the Yellow legged hornet.

As there are a number of native insects which have yellowish legs, another way to identify it by its orange face. This is so obvious, that it really stands out, but the orange faced hornet is not so catchy.

In 2023, 35 nests were found and destroyed in East Kent; last year only 7. However sightings this year are now at a higher number than at the same point in 2023. Local beekeepers are again systematically monitoring large areas and, in partnership with the National Bee Unit, (NBU), will find and destroy any nests, when hornets are reported.

Your help is invaluable in spotting these unwanted insects. If you see one, please report it via the Asian Hornet Watch App. This is a free App for both Apple & Android phones. Alternatively report it via the National Bee Unit or BBKA websites.

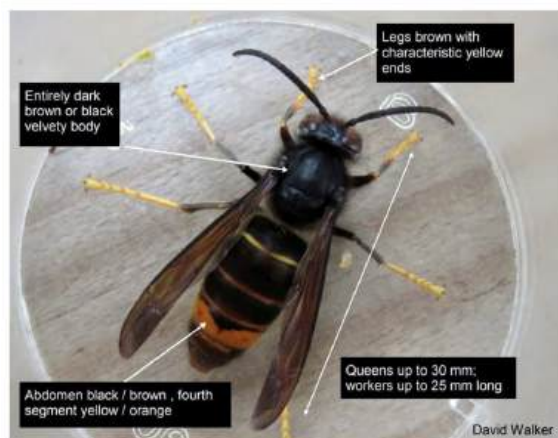
A photo of the insect is needed with the report. If able to catch it, kill it by putting it in the freezer after taking your photo; always save the body for NBU.

**PLEASE BE WARNED THESE INSECTS DO STING AND WILL BECOME DEFENSIVE IF CAUGHT; NEVER RE-OPEN THE CONTAINER ONCE TRAPPED.**

Early studies show they are voracious predators. The most common things they were eating were wasps, honeybees, blowflies and bottleflies, along with hoverflies and heather bees. In France, where they are now established, they are regularly seen taking meat and fish from open air markets and there is growing evidence of possible economic impact on agriculture.

Last year, a very small primary nest was found at Krusty's eatery, off the B2046, near Aylesham. It is possible the queen considered this a prime nest site, with the remains of bacon and sausage in bins. These remains would also have traces of human saliva which would be detected by the researchers and helps explain why human DNA turned up in the guts of some larvae. In Spring, the flowers of rhododendrons and azaleas are also a rich source of energy giving nectar; queen hornets are particularly attracted to these.

All beekeepers are concerned by the devastation these hornets can cause to a honeybee colony, but there is no doubt as generalist predators they will eat other insect, including moths, butterflies, solitary bees and occasionally bumblebees. So, whilst hoping for even fewer nest this year, we would ask you to be extra vigilant as the warmer weather comes.



al-

# Saint Margaret's Church

For weddings, baptisms, etc. contact the Parish Office [calehillpcc@gmail.com](mailto:calehillpcc@gmail.com) 07395 910317

Rector: Rev. Sandra Marsh The Vicarage Pett Lane Charing Kent TN27 0DL Phone: 01233 713996 email: [revsandramarsh@btinternet.com](mailto:revsandramarsh@btinternet.com)

## Services in Aug

Sunday 3rd 11.00am The Eucharist

For services in our other churches, see [www.calehill-westwell.uk](http://www.calehill-westwell.uk)

**Wednesday 10<sup>th</sup> September at 2.30 at Egerton Millennium Hall, Elm Close TN27 9DS**



### Architecture of Mughal India: Palaces, Mosques, Gardens And Mausoleums.

Our lecturer **Dr John Stevens**, teaches British Imperial History, Indian History and Bengali Language at the School of Oriental and African Studies.

Visitors are always very welcome at £8 (just turn up and pay on the door), refunded if you join.

Membership costs £45 for 10 lectures. For further information please contact Christine Willis, our Membership Secretary via [cmwil-lis75@gmail.com](mailto:cmwil-lis75@gmail.com) or 01233 756377.

See also our website [www.theartsocietyegerton.org.uk](http://www.theartsocietyegerton.org.uk)

Image provided by lecturer



### Celebration Cakes for all occasions including Weddings

Special bakes include personalised cupcakes, Brownies, Blondies, chunky cookies and personalised biscuits

You can find me on: Instagram - @flossysfussybakes



## SHIFT HAPPENS

### DRIVING TUITION

Paul 07703 685143

[www.shifthappensdrivingtuition](http://www.shifthappensdrivingtuition)

## Art Group

There is a small group that meets twice a month on Monday afternoons in Westwell Village Hall.

We enjoy painting, drawing etc, together with a cup of tea and a chat.

If anyone is interested in joining us, please contact Penny Sutcliffe on 01233 634191 for more details.

## HOTHFIELD NEWS

is edited by Ian Lloyd and financed and published by Hothfield Parish Council. Email: [ian.lloyd@hothfield.org.uk](mailto:ian.lloyd@hothfield.org.uk)  
Letters and articles for publication are always welcome, deadline for inclusion is 20th Monthly. Advertising is free to businesses working in, or for, the Parish of Hothfield. Email the Editor for information on advertising prices for outside companies. Editor reserves the right to adjust all articles for space as required.