



Hothfield News

March 2008

The Monthly Newsletter by and for the Hothfield Community

WELCOME

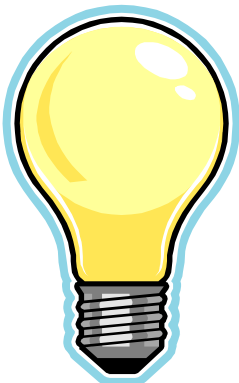
A bumper issue this month – must be the Spring weather encouraging everyone to share information! This month we have some new contributors including Charing Pre School, information about a special ladybird, how to be an expert patient and news of our Community Warden and local Police Officer. We also have our regular items from the Parish Council, the Church and others. So, make the most of the sunshine, sit back and read what's happening in YOUR community!

Thanks to a number of people who have fed back positively on the newsletter. It is good to know that the Newsletter is meeting a need and being well received. Just keep those contributions coming!

HOTHFIELD PARISH COUNCIL - Shirley Whittington

At the start of every meeting we have what is called the Public Interval which means that any member of our community can come along and ask questions of the Parish Councillors and alternatively share with us their concerns about the village. We were very pleased to welcome several members of the public together with PCs Phil Smith and Chris Miller to this February meeting.

A large part of the business at this meeting centred around the problems relating to the site of the Old King's Head. The planners at Ashford Borough Council have been singularly unhelpful to us and continue to refuse permission for the site to be developed. We know from the telephone calls and the information we receive from you that many of you are distressed and angry because of the current state of the car park. I would like to reassure you that the Parish Council is doing its very best and is spending a great deal of time and effort in trying to bring the current state of affairs to a satisfactory conclusion.



Under the agenda item Crime and Disorder PC Phil Sharpe updated us on the work he has been doing in the village. Unfortunately he often can't take action to help us because he doesn't have the necessary information. Please remember that you can contact the police without giving your name on 07980770577 or alternatively Crimestoppers on Freephone 0800 555111.

On a more positive note you will notice that the lights on Station Road are finally working. I hope you will agree with me that the village is also looking so much tidier now that we have our village orderly working on a weekly basis. At the request of residents we are also investigating the work needed to prune or even remove the very tall hedge to the front of the village hall.

Finally we have been informed that the bus stop on School Road could do with improving so we are looking into this also. Let us know what you think about this and in fact about other improvements you would like to see in our village.

DID YOU KNOW... ..

- Your brain uses 10 watts of energy each day.
- Women skiers are most likely to fall on their backs, men on their faces.
- Barbie's first outfit was a zebra-striped swimsuit in 1959.
- Backstroke, rowing and tug of war all involve players going backwards.



CHARING PRE-SCHOOL – Julie Kench

We welcomed the Mayor of Ashford, Councillor Rita Hawes, to celebrate opening for FULL DAY CARE this term. Madam Mayor enjoyed meeting children, parents and staff, and learning about the Pre-School's future aims and ambitions. This follows recent successful OFSTED inspections and a successful grant bid from KCC for additional resources to further enhance the children's learning.



At Charing Pre-School we provide care and learning opportunities for children aged 2½ to 5 years. We are open 9.30am to 3pm Mondays to Fridays during school term time. On Tuesday afternoons we offer a Fours Group for children preparing to move on to Primary School education in the next school year.

We are a friendly Pre-School, members of the Pre-School Learning Alliance and a registered Charity. We are based at THE PAVILION, CHARING PLAYING FIELDS, Charing, with direct access to the large playing fields and adjoining woodland that we use regularly.

OFSTED described our Pre-School as offering a warm welcome where 'children quickly settle and become happy in the homely environment'. We received praise from OFSTED for our support of children with additional needs and we work in close partnership with parents and professionals. We cover all areas of learning from the Early Years Foundation Curriculum with lots of fun activities. We also have weekly visits from a French teacher and a dedicated music time.



Due to our increased opening, we currently have spaces available and welcome children to book for a taster morning or afternoon. Telephone 01233 712180 (Pre-School hours) or e-mail Julie.kench@talktalk.net.

Pre-School Learning Alliance Registered 27101- 56690, Charity No 1055610, OFSTED URN 127093

WERE YOU IN THE WOMEN'S LAND ARMY?



If so, did you know that members of the Land Army and the Women's Timber Corps who served during either World Wars are eligible to apply for the Land Army' Veteran's Badge? Badges will be awarded to members as of 6 December 2007. Badges will not be awarded to spouses or families of deceased members, except where death has occurred after 6 December 2007. For further details call 08459 33 55 77 or email womenslandarmy@defra.gsi.gov.uk (or contact the editor for an application form).

UK VETERAN'S LAPEL BADGE



Community Registered
Design
No 000274493-0001

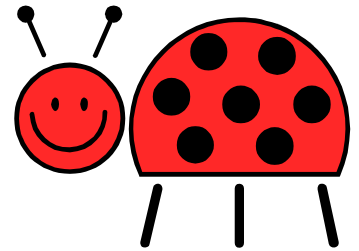
For generations our Armed Forces have served their country across the world in many roles from war fighting, peacekeeping and reconstruction to home defence. In so doing, they have defended our country, our way of life and our cherished values. A large number of our veterans are young and active and now use the skills, the discipline and the leadership qualities they learned in the Armed Forces to benefit their civilian employers and the wider community. To promote recognition of veterans by the wider British public the unique and unifying symbol of the HM Armed Forces Veterans Badge was introduced by the Government.

All those who have served in HM Armed Forces are eligible although the badge is not issued posthumously. The only exceptions are War Widows and Widowers who are in receipt of a War Widows/Widowers Pension paid by the Service Personnel and Veterans Agency.

You can apply or get more information by calling 0800 169 2277.

Looking for the Harlequin Ladybird!

Have you heard of the new visitor to the country? The Kent and Medway Biological Records Centre would like to introduce the harlequin ladybird (*Harmonia axyridis*), the ladybird alien to the UK which is extremely invasive.



According to some authors, this species competes with our native ladybirds and might replace our native ladybirds as the grey squirrel (*Sciurus carolinensis*) did in Kent with the red squirrel (*Sciurus vulgaris*). However, as a ladybird it can still help the gardener by eating aphids.

Originating from Asia, this ladybird was first recorded in Britain in Essex, 2004. Since then, Kent has become a 'hotspot' for the species. The species is currently being surveyed by members of the public and entomologists such as Helen Roy of the Anglia Ruskin University who says it has been described as "the most invasive ladybird on earth".

We'd like to invite you to track the species by keeping an eye out and telling us if you see one. You can also record your sighting on the national website for the species: www.ladybird-survey.org

How to recognise a harlequin ladybird.

- It is usually bigger than other ladybirds (6-8mm long, which is at least as big as a 7-spot ladybird);
- It may be a variety of colours, which explains its name 'harlequin' which means 'colourful' or 'changing-colour';
- It may have lots of black spots (15 to 20) or 2 or 4 orange or red spots;
- It normally has brown legs.

As a recording centre, we collect, collate and disseminate wildlife information specifically for Kent and Medway. Essentially if we know where species are we can work towards protecting them.

You can get involved in wildlife recording by letting us know about the harlequin ladybird in your area or anywhere in Kent & Medway!



In addition to the harlequin, we are interested to know about all species (plants, fungi, birds, spiders, etc.) occurring in Kent. Common species such as rabbits and blackbirds are as informative as rare species!

To be a useful record, information needs to contain the 4 'W's to meet national standards. These are **Who** (the Recorder's name = you), **What** (the recorded species), **Where** (the record location) and finally, **When** (date of the sighting).

If you think recording may interest you, please do not hesitate to contact us at: Kent & Medway Biological Records Centre (KMBRC). Tyland Barn, Sandling, Maidstone, Kent, ME14 3BD, (01622) 685780/685646. info@kmbrc.org.uk www.kmbrc.org.uk

OUR COMMUNITY WARDEN and COMMUNITY POLICE OFFICER

Our Community Warden, Lyn Marshall, has been transferred to the KCC Response Team. Community Warden Sarah Port has now been appointed to Hothfield until Lyn's replacement is trained and ready to go, probably at the end of April. Sarah can be contacted on 07773 396657 or by email Sarah.Port@kent.gov.uk We were disappointed that Kent County Council did not tell us about Lyn's transfer in advance – we heard about it only by chance – and have raised this with the County Council.



We also understand that our Community Police Officer, Phil Smith, is moving on after several years in Hothfield. We do not yet know who will be replacing Phil but will tell you as soon as we know. The contact details for the new 'un will be the same as for Phil.

Through the Newsletter we want to thank both Lyn and Phil for their support to Hothfield and our community and to wish them both well in their new posts. At the same time we welcome Lyn and Phil's replacements – and look forward to their contributions to this newsletter!

COULD YOU BE AN EXPERT PATIENT? –

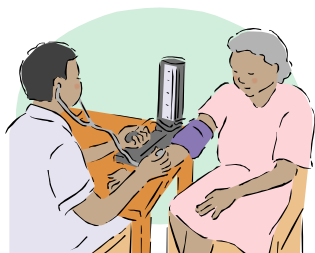
Joy Hadaway, Patient & Public Engagement Manager, Ashford & Shepway

A free course for people living with long term conditions

Do you have a long term or chronic illness and want help to take more control by learning new skills to manage your condition better on a daily basis?

Well, help is available through the Expert Patient Programme, whether it be dealing with pain, coping with feelings of depression, relaxation techniques and exercise and planning for the future.

There are no miracles on offer here, but plenty of experience and common sense to share with others who all have something in common. The Programme consists of a series of meetings, one session a week for seven weeks, at a convenient location. Trained tutors will lead discussions to the various difficulties people find they have to cope with. (All the tutors themselves have a chronic condition, so they understand the problems).



Local tutor Lesley Stewart wanted to get involved. She said: "I saw it as a way to help others in a similar position to how I'd been ... people who have lost their confidence, feel isolated or alone, aren't taking any exercise. The action planning

they use in the programme is so helpful. I really wanted to share those skills with others. And what I'd say to others 'Go for it – you've got nothing to lose and so much to gain'.

If you feel this free programme might benefit you contact Claire Doran on 01304 216857. Claire can give you more information and tell you where and when further courses are being held. If you cannot get on a course we can put you on a waiting list until such time as to run them.

St Margaret's Church News - Sue Starkings

Church Services for March are as follows:

Sunday 2nd March 9.30 am Parish Communion

Sunday 9th March 11 am Service

Sunday 16th March 11 am Service Village Hall (breakfast at 10.30)

Friday 21st March 9.30am Good Friday Service

Sunday 23rd March 9.30 am Easter Day Family Eucharist Service



Church News



Wedding

Paul Whatman and Laura Mundy. Paul and Laura were married at St. Margaret, Hothfield on Saturday 2 February. *May God strengthen them in their married life together*

Funeral

Patricia Pemble Patricia died on Saturday 1 December 2007 aged 89. Her funeral took place at Charing Crematorium on Wednesday 12 December 2007. *May God enfold Patricia in his tender love and care*

Thank You A total of £92.82 was collected by the Carol Singers who went round the village at Christmas and this amount was sent to The Children's Society. A big thank you to all.

MONDAY NIGHT GROUP The Friday Night Group is no more, and that's because we now meet on a Monday evening. The next meeting will be on Monday 3rd March, at Westwell Vicarage, when we shall discuss *The Significance of Jesus' Death*. If you've not been before, but would like to come along, then let Lindsay know.

ANNUAL PARISH CHURCH MEETING Here is advance notice of the dates of this year's Annual Parish Church Meeting: Hothfield 6th April during the 9.30am service.

CONFIRMATION

Would you like to be confirmed? Or are you just interested in the Christian faith and would like to find out more? We are holding a Confirmation Service in our group of parishes on the 8th July 2008, so if you would like to discuss confirmation, then please get in touch with The Reverend Lindsay Hammond on 01233 712576 (lindsayhammond@hotmail.co.uk) as soon as possible.



LILIES FOR EASTER As we are now in Lent it is time to think about Lilies for Easter. If you would like to donate a lily to St Margaret's Church in memory of a loved one for Easter, please contact Jane Oliver on 01233 840310.

All Change!

Dear Friends,

It's difficult to believe that Diane has been here three and a half years. Although we knew that Diane would be with us only for about four years, I know that we are all very sad that she will be leaving us. We don't know the exact date yet, except that it will be during May. When the time arrives, however, we shall gather to bid Diane a fond farewell, thank her for her friendship and for her good and faithful service, and pray for God's blessing on her future ministry.



Diane's successor will be Sally Womersley. Sally will join us in June and, nearer the time, will introduce herself. Sally will be ordained in Canterbury Cathedral on Saturday 28th June at 11.00a.m, and her first official day with us will be Sunday 29th June.

As we prepare to welcome Sally, we should bear in mind some important points:

First, like Diane, Sally will be here for about four years and licensed to me as priest in charge of the seven parishes.

Second, Sally is coming here, first and foremost, to be trained. In effect, Sally will be an apprentice, gradually assuming more responsibility at a pace she feels comfortable with. I will be responsible for co-ordinating Sally's training but Sally will gain the greatest experience by working across the seven parishes and with the various members of our team. Sally will also have to attend training days organised by the Diocese. Although Sally will be living in Egerton Vicarage, and will undoubtedly develop a role within the village, we must resist the temptation to see her as parish priest of Egerton. That is my role and I will be present at PCC meetings and oversee the worship arrangements.



Third, Sally will serve as a deacon for her first year and then, if all goes well, be ordained priest in the summer of 2009. A deacon may not preside at Holy Communion, pronounce absolution or a blessing, nor normally conduct a wedding.

I hope this explains everything clearly. It is difficult, this far in advance, to be accurate about dates but I will let you have further information when it becomes available.

With every good wish.

Lindsay

The Reverend Lindsay Hammond, Priest in Charge

SPOKEN WORD BOOKS ON CD AND CASSETTE

Anyone in Kent who is blind or partially sighted can use this service from Kent libraries. Books are delivered free of charge and can be kept as long as you like. Further details from 01622 605 214. And on a similar subject, a reminder that large print versions of this newsletter are available – also free of charge. Just let the editor or your newsletter delivery volunteer know if you would like a large print version.

PARTNERS AND COMMUNITY TOGETHER (PACT) MEETING



7 pm on Wednesday 19 March 2008 at the new Children's Centre (the old school building), School Road, Hothfield.

What is it?

PACT is a way of telling the various public bodies about the problems that affect you and your community, regardless of how trivial or serious they might be.

Who will be there?

Representatives from the Police, Parish Council and some Borough Council departments. Because this is the first meeting we don't necessarily know who to ask along. Once we have identified your priorities there may be other bodies that we need to invite.

Do I have to stand up in a public meeting and ask my question?

No. If you want to attend but not speak in public, or if you want to contribute but cannot attend you can do the following:-

- E Mail to this address – 8866@kent.pnn.police.uk
- PC Smith's mobile 07980 770577
- Leave a message on (01233) 896332
- Send a letter to PC 8866 Smith, Neighbourhood Policing, Police Station, Tufton Street, Ashford, TN23 1BT.

Any correspondence must reach me by **18th March**.

Come along, or contribute in any of the above ways. We need to know what your priorities are before anything can be done.

HOTHFIELD FAMILY FUN DAY – based on information from Sure Start



This took place on Monday 18 February, the first day of Half Term. Around one hundred children and over fifty adults from the whole area came along including many from the surrounding villages. There was a variety of activities ranging from handcraft to Brazilian martial arts. Information was given out on the Local mobile library, and everyone was able to catch up on the latest news of the Children's Centre which will be opening soon. Local parents were able to look at plans for a toy library and gave their views on that and were pleased that the event had been put on as there is very

little going on locally for families and the children get bored easily during the holidays.

The Children's Network Fund sent its play team along and they did activities for the children in the car park. They plan to come back and do some activities in the local park with the children during the holiday period. Afterwards, a fairly large group of children stayed on to attend the youth forum.



HOME FIRE SAFETY CHECKS



Almost all fires in the home can be prevented. To make your home safer and to help reduce casualty and death from fire in the home, Kent Fire and Rescue Service is offering free Home Fire Safety Checks. The check involves home fire safety advice and if required the installation of free 10 year smoke alarms.

To arrange a Home Fire Safety Check telephone free on 0800 9237000.

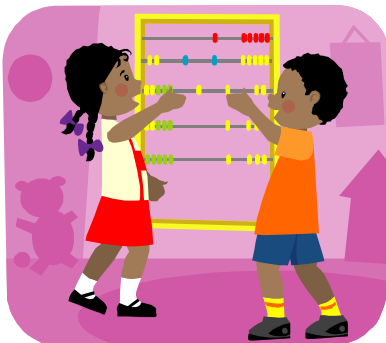
CHANGES TO THE BUS PASS SCHEME

From 1 April 2008 if you're 60 or over, or have an eligible disability, your bus pass is changing. The new pass will allow you to enjoy free off-peak travel on local buses anywhere in England. From 1 April 2008, you will be entitled to free off-peak travel (9.30am until 11pm Monday – Friday, and all day weekends and bank holidays) on local buses anywhere in England, not just in Kent. To find out about bus timetables and information visit the Travel Line website or call 0871 200 22 33. The two main bus providers in Ashford are Stagecoach - 08456 00 22 99 and Kent Coach Tours - 01233 627330.



BULKY ITEM COLLECTION BY ASHFORD COUNCIL

ABC will collect bulky domestic waste including furniture, white goods, electrical appliances and most other items that you would expect to take with you if you were moving house (NOT DIY material, nor builders waste). There is a minimum, non-refundable, charge of £15 but the overall cost will be based on the number and size of items being collected. Call 01233 330728 for more information.



STOP PRESS!

Open day at the Hothfield Children's Centre on Wednesday 5 March between 10am and 3pm. Call in and see the facilities, meet the staff – and feed in YOUR ideas! All welcome. More details from Kareen on 0800 587 7455.

HOTHFIELD NEWS

All contributions, letters, comments etc for the newsletter should be sent to the Editor, Chris Twydell, at 37 Coach Drive by the 15th of each month or by email to hothfieldnewsletter@gmail.com Thanks. 01233 635 372. If you would like to receive a copy of the newsletter by e mail, or would like a large print copy, please let me know.

AND FINALLY.....

Before you criticise someone, walk a mile in their shoes. That way, not only are you a long way from them but you also have their shoes!